



Construction of precast reinforced concrete structures

István Vidovszky PhD

definition

2

Prefabricated reinforced concrete construction:

Construction of RC components of buildings, the majority of which are **standardized** and **produced either at the construction site**, or (much more often) **in plants in a location away from the building**, and then **transported to the site** for assembly.

general characteristics of precast structures

4

advantages

- economic use of auxiliary materials (formwork, scaffolding) - several repetition (at least 30 identical casts /mould)
- reduced construction time - larger quantity of components is possible at the same time
- less skilled labor is required

limitations

- size of the units
- location of window openings has a limited variety
- joint details are predefined
- site access and storage capacity

types

3

Site-cast (local precast):

- no transportation
- the size limitation is depending on the elevation capacity only
- lower quality because directly affected by weather
- proper, large free space required

precast at a plant:

- transportation and elevation capacity limits the size
- higher, industrialized quality – less affected by weather
- no space requirement on the site for fabrication
- „unlimited” opportunities of architectural appearance
- option of standardized components (precast catalogue)

material

5

reinforced concrete

SCC (self-compacting (consolidating) concrete)

– for fair faced concrete

CRC (compact reinforced composite)

– high strength material for slender structures

GRC (glass-fiber reinforced concrete)

disadvantages of precast structures

6

architectural options – surface appearance

plant casting :

- allows high quality control
- allows greater option of finishes
- enable interaction between design phase and production planning

options of surface appearance

7

surfaces with surface treatment of the material



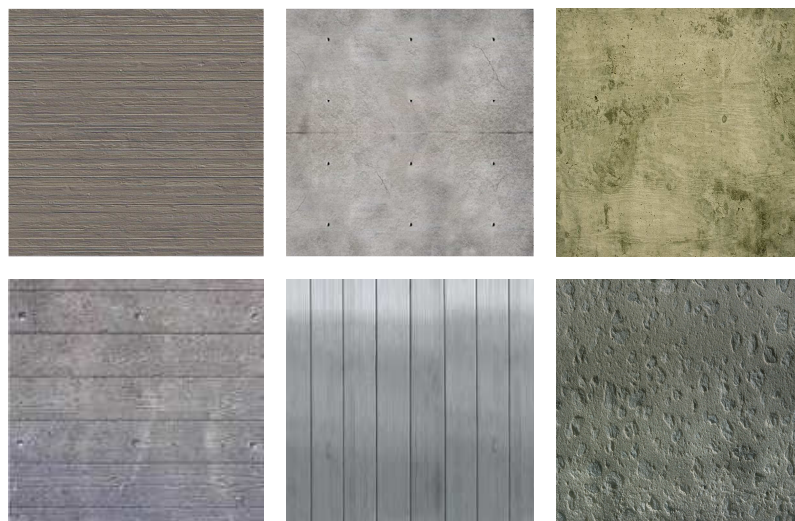
Vidovszky – BUTE/BME-Faculty of Architecture – Department of Construction Technology and Management

9/11/2012

options of surface appearance

8

classical patterns – with the surface of the form-facing



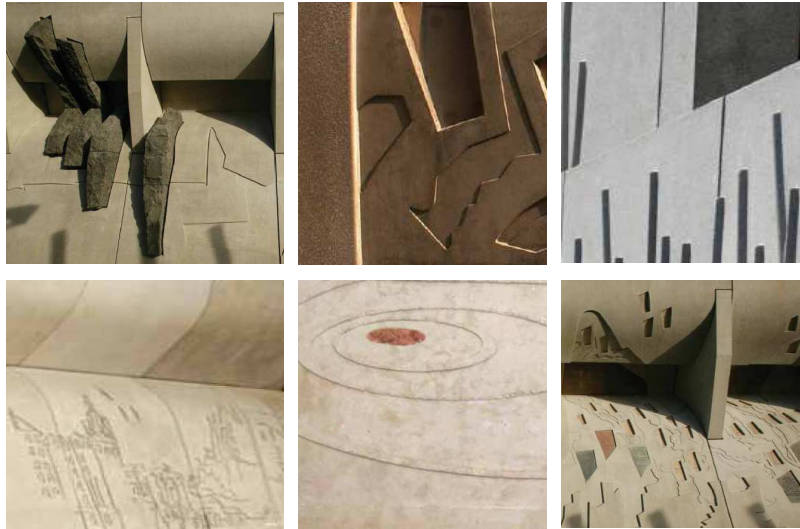
Vidovszky – BUTE/BME-Faculty of Architecture – Department of Construction Technology and Management

9/11/2012

options of surface appearance

9

advanced patterns – with special designed form-facing / CNC-cut patterns



Vidovszky – BUTE/BME-Faculty of Architecture – Department of Construction Technology and Management

9/11/2012

options of surface appearance

10

advanced patterns – with special designed form-facing / CNC-cut patterns



1. cutting



2. wood/plywood form-facing



3. concrete surface

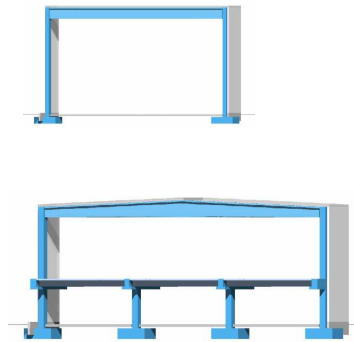
Vidovszky – BUTE/BME-Faculty of Architecture – Department of Construction Technology and Management

9/11/2012

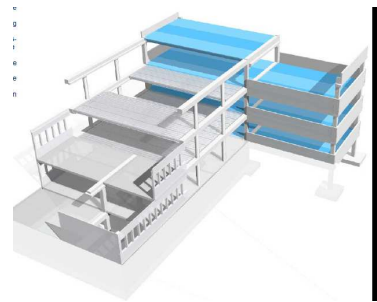
building types

11

One or two storey hall-like buildings



Multi-storey buildings



Vidovszky – BUTE/BME-Faculty of Architecture – Department of Construction Technology and Management

9/11/2012

structure types

12

categories of load-bearing structure

- large-panel systems
- frame systems
- slab-column systems with shear walls
- mixed systems

Vidovszky – BUTE/BME-Faculty of Architecture – Department of Construction Technology and Management

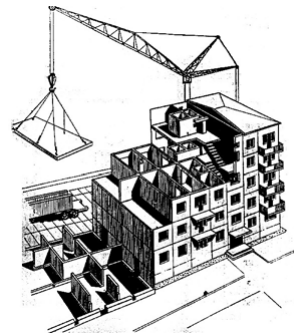
9/11/2012

structure types

13

large-panel systems

- box-like structure,
- both vertical and horizontal elements are load-bearing
- one-story high wall panels (cross-wall system / longitudinal wall system / two-way system)
- one-way or two way slabs



Vidovszky – BUTE/BME-Faculty of Architecture – Department of Construction Technology and Management

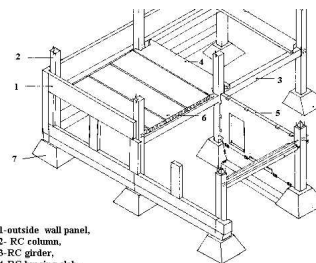
9/11/2012

structure types

14

frame systems

- components are usually linear elements (beam-pillar frames are rare because difficult to handle)
- the beams are seated on corbels of the pillars usually with hinged-joints (rigid connection is also an option)
- joints are filled with concrete at the site



- 1-outside wall panel,
- 2- RC column,
- 3- RC girder,
- 4-RC bracing slab,
- 5- RC diaphragm,
- 6- RC ceiling slab,
- 7- RC foundation

Vidovszky – BUTE/BME-Faculty of Architecture – Department of Construction Technology and Management

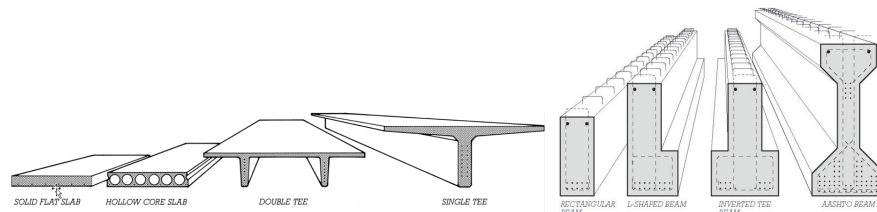
9/11/2012

structure types

15

prestressed slab-column systems

- 2-3 storey high pillars
- prestressed beams and slab panels (by means of prestressing tendons)
- in-situ concreted joints
- shear walls (precast or cast-in-place) positioned between the columns at appropriate locations (shear system)



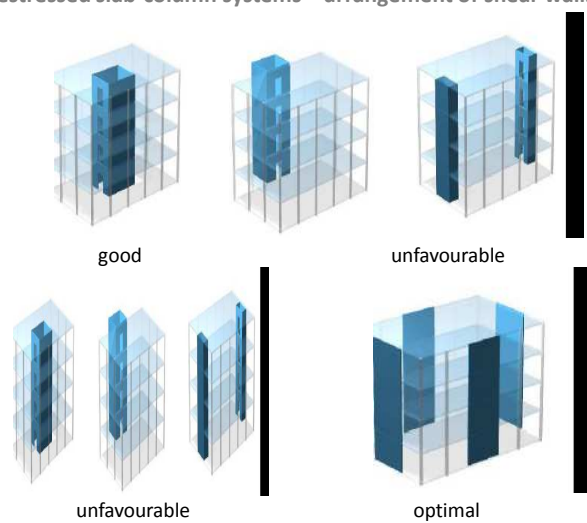
Vidovszky – BUTE/BME-Faculty of Architecture – Department of Construction Technology and Management

9/11/2012

structure types

16

prestressed slab-column systems – arrangement of shear walls



Vidovszky – BUTE/BME-Faculty of Architecture – Department of Construction Technology and Management

9/11/2012

structure types

17

lift-slab systems

- partially precast in plant (pillars) / partially precast on-site (slabs)
- one or more storey high pillars (max 5)
- up to 30 storey high constructions
- special designed joints and temporary joints
- slabs are casted on the ground (one on top of the other) – then lifted with crane or special elevators (two lifting methods: Bulgarian, American)

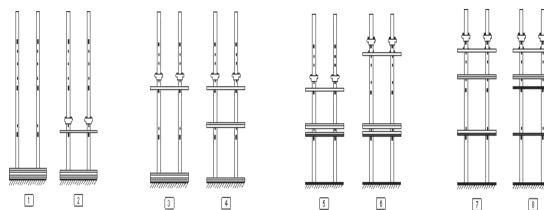


Vidovszky – BUTE/BME-Faculty of Architecture – Department of Construction Technology and Management

9/11/2012

lift slab procedure

18



1. pillars and the first package (e.g. 5 pieces) of slabs prepared at ground level
2. lifting jacks are mounted on the pillars + a single slab lifted to the first floor level
- 3-8. boxes are sequentially raised to higher positions to enable the slabs to be lifted to their required final position - slabs are held in a relative (temporary) positions by a pinning system

Vidovszky – BUTE/BME-Faculty of Architecture – Department of Construction Technology and Management

9/11/2012

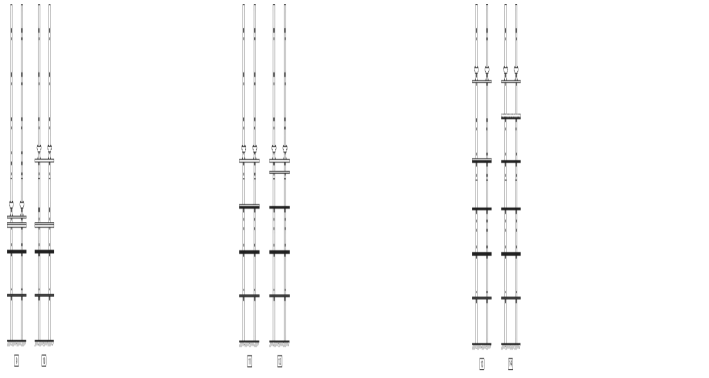
lift slab procedure

19

9. extension of pillars

10-14. the first package of slabs are lifted further to make space for the next package of slabs / or new slabs can be fabricated on at a higher level not to disturb the further construction works at the first levels

At the end of the lifting process the lifting jacks are removed from the top of the pillars



Vidovszky – BUTE/BME-Faculty of Architecture – Department of Construction Technology and Management

9/11/2012

preparatory work phases

20

- 1.Design of the building
2. Preparation of element consignment
3. Planning the transport routes
4. Planning the lifting sequence of the elements and the temporary bracing system
5. Planning the lifting operations – step by step for each elements – Non-isotropic , vulnerable components!!!
6. Selection of the temporary structures of the assembly
7. Planning the site arrangement

Vidovszky – BUTE/BME-Faculty of Architecture – Department of Construction Technology and Management

9/11/2012

preparatory work phases

21

Design considerations

- final position and loads
- transportation requirements – self load and position during transportation
- storing requirements – self load and position during storing – (avoid or store in the same position as it transported / built in)
- lifting loads – distribution of lifting points – optimal way of lifting (selection of lifting and rigging tools)
- vulnerable points (e.g. edges) – reduction of risk (e.g. rounded edges)



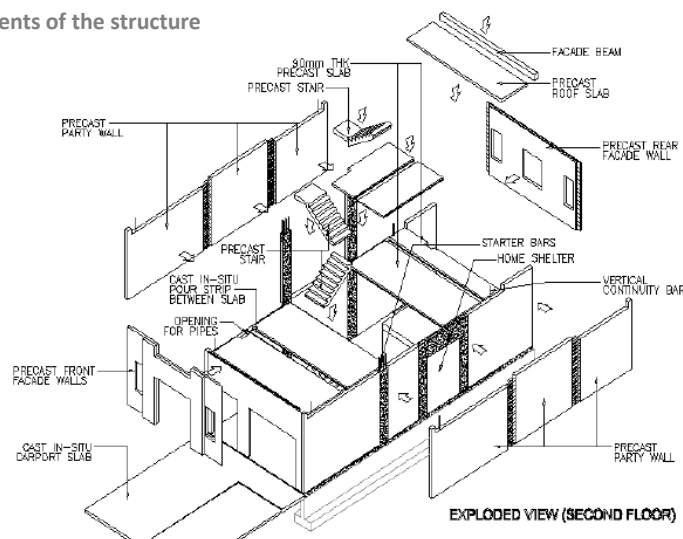
Vidovszky – BUTE/BME-Faculty of Architecture – Department of Construction Technology and Management

9/11/2012

preparatory work phases

22

Elements of the structure



Vidovszky – BUTE/BME-Faculty of Architecture – Department of Construction Technology and Management

9/11/2012

preparatory work phases

23

Element consignment

	ID	Function	Figure (drawing + lifting points + reinforcement)	Geometry (cm)	Weight (t)	Amount
1.	RcW-01	rc wall panel		400x300x12	3,6	36
2.	RcP-01	pillar		300x20x20	0,3	40
3.	RcS-01	hollow slabpanel		400x750x30	13,2	18
...						

preparatory work phases

24

Planning traffic route

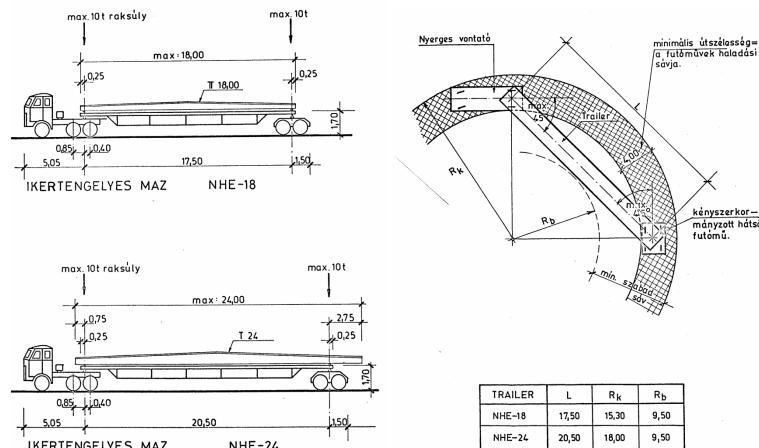
- How long transport-vehicle is required?
- What is the required load capacity of the transporter vehicle?
- What is the maximum vertical extension of the shipment?
- Is route permission required?
- Routes on the site



preparatory work phases

25

Planning traffic route



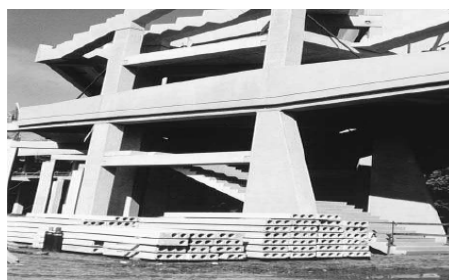
Vidovszky – BUTE/BME-Faculty of Architecture – Department of Construction Technology and Management

9/11/2012

preparatory work phases

26

Site arrangement - storing elements on site



Optimal to avoid storing on site!

If it is not possible - elements recommended to be stored in similar position to their future built-in position!

If it is not possible either - design consideration have to be made for storing regarding to the reinforcement!

Vidovszky – BUTE/BME-Faculty of Architecture – Department of Construction Technology and Management

9/11/2012

preparatory work phases

27

Elevation plan

- work sequence
- plan of the elevation step by step for each element (pillars, beams, slabs, wall panels)
- temporary bracing, supporting system and final shear walls



Temporary structures & site organisation plan!

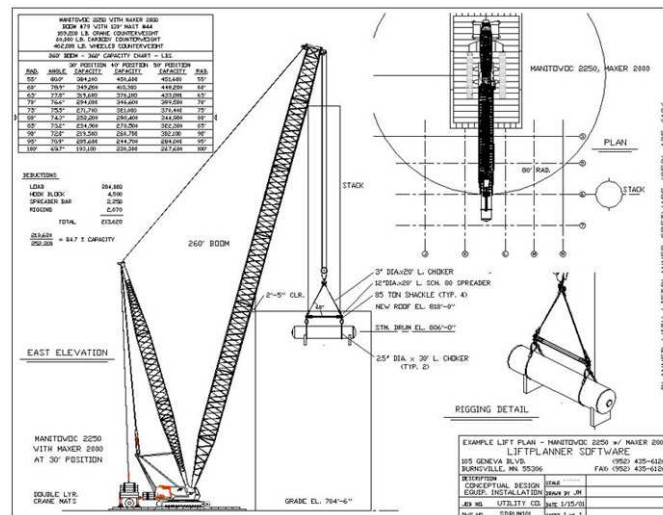
Vidovszky – BUTE/BME-Faculty of Architecture – Department of Construction Technology and Management

9/11/2012

preparatory work phases

28

Elevation plan (example)



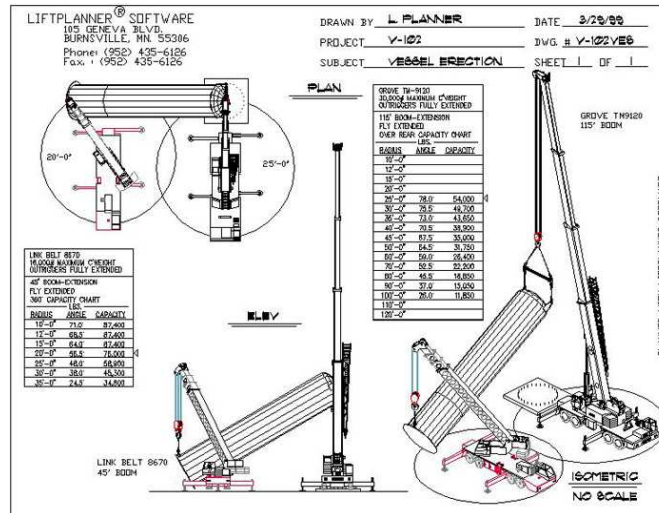
Vidovszky – BUTE/BME-Faculty of Architecture – Department of Construction Technology and Management

9/11/2012

preparatory work phases

29

Elevation plan (example)



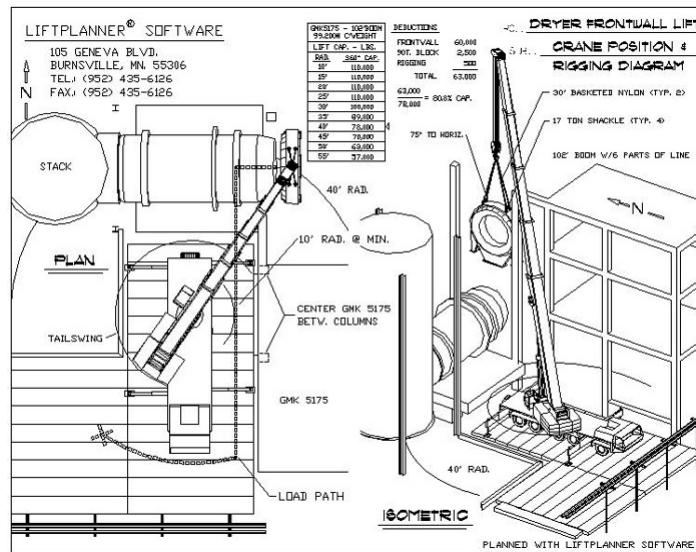
Vidovszky – BUTE/BME-Faculty of Architecture – Department of Construction Technology and Management

9/11/2012

preparatory work phases

30

Elevation plan (example)



Vidovszky – BUTE/BME-Faculty of Architecture – Department of Construction Technology and Management

9/11/2012

equipments

31

cranes:

- mobile crane
- tower crane (above 3 storeis)



lifting tools:

- spreader beams
- wire rope slings



→ to eliminate extra load from lifting

rigging tools:

- eye bolt
- shakles
- hooks



→ on the elements (lifting points)



→ for the crane

Vidovszky – BUTE/BME-Faculty of Architecture – Department of Construction Technology and Management

9/11/2012

selection of mobile crane

32

relevant parameters:

1. Lifting heights =

= the level of the final location of the element

+ the height of the highest element +

+ the height of the equipment (lifting and rigging tools) +

+ 1m

2. Lifting weight =

= the weight of the heaviest element to lift



Vidovszky – BUTE/BME-Faculty of Architecture – Department of Construction Technology and Management

9/11/2012

work sequence of the assembly

33

I. floor

vertical load-bearing structure (e.g. pillars or walls)

temporary supports (if needed)

shear walls

horizontal load-bearing elements (e.g. beams + slabs)

preparation of the structural joints

Non-load-bearing elements (e.g. non-load-bearing wall panels)

II. floor

... ..



Vidovszky – BUTE/BME-Faculty of Architecture – Department of Construction Technology and Management

9/11/2012

assembly

34



erecting multi-storey pillars



lifting wall elements

Vidovszky – BUTE/BME-Faculty of Architecture – Department of Construction Technology and Management

9/11/2012

assembly

35



wallpanels with temporary supports



lifting slab panels

Vidovszky – BUTE/BME-Faculty of Architecture – Department of Construction Technology and Management

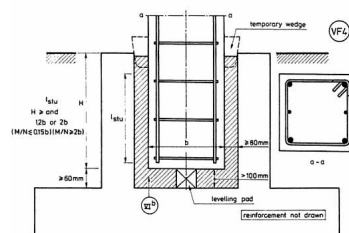
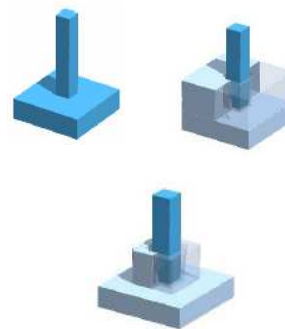
9/11/2012

5. preparing structural joints

36

Foundation types:

- A. plain reinforced concrete
- B. Stepped reinforced concrete
- C. mass concrete



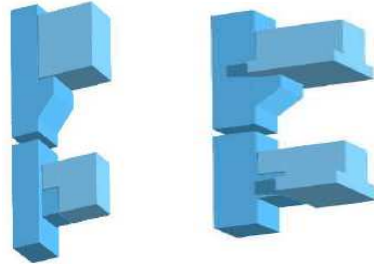
Vidovszky – BUTE/BME-Faculty of Architecture – Department of Construction Technology and Management

9/11/2012

preparing structural joints

37

Pillar-beam joints



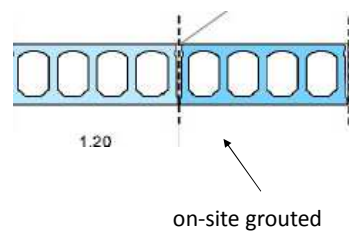
Vidovszky – BUTE/BME-Faculty of Architecture – Department of Construction Technology and Management

9/11/2012

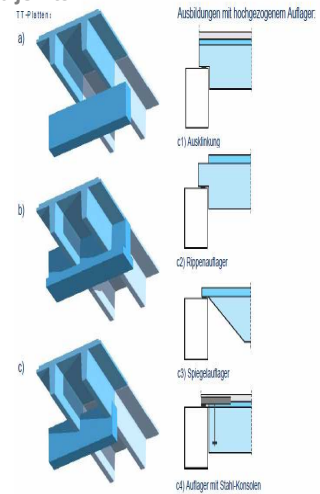
preparing structural joints

38

Slab-slab joints



Beam-slab joints



Vidovszky – BUTE/BME-Faculty of Architecture – Department of Construction Technology and Management

9/11/2012

preparing structural joints

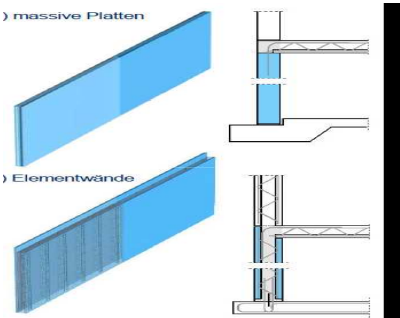
39

solid wall panels

) massive Platten

) Elementwände

sandwich panel system



Wall-joints

Vidovszky – BUTE/BME-Faculty of Architecture – Department of Construction Technology and Management

9/11/2012

scheduling

40

some approximate data for installation

emplacement of hollow core floor slabs - 300 m²/day

erection of pillars/columns - 8 pieces/day

emplacement of beams - 15 pieces/day

emplacement of double tee slabs - 25 pieces/day

emplacement of walls - 15 pieces/day

construction of stair and elevator shafts - 2 floors/day

Vidovszky – BUTE/BME-Faculty of Architecture – Department of Construction Technology and Management

9/11/2012

examples

41



GRC facade wall elements, Office building, 25 – 35 Park Lane, London, United Kingdom

Vidovszky – BUTE/BME-Faculty of Architecture – Department of Construction Technology and Management

9/11/2012

examples

42



SCC construction elements, Office building, 35 Homer Road, Solihull, United Kingdom

Vidovszky – BUTE/BME-Faculty of Architecture – Department of Construction Technology and Management

9/11/2012

Thank you for your attention!

References

R

- [1] Szőnyi L.: Construction of prefabricated reinforced concrete buildings, 2011 (Presentation)
- [2] Benett, D.: Concrete Elegance 2004. Concrete Centre, 2005
- [3] Precast Concrete Structures. www.paradigm.in 2012.10.10
- [4] S. Brzev, T. Guevara-Perez: Precast Concrete Construction. <http://business.management6.com/PRECAST-CONCRETE-CONSTRUCTION-pdf-e13174.pdf> 2012.10.10
- [5] Sonjoy Deb: Precast Concrete for Building Systems <http://masterbuilder.co.in/Archives/Building%20Materials/Concrete/Precast%20Concrete%20for%20Building%20Systems.pdf> 2012.10.10
- [6] Lift slab system - http://webs.demasiado.com/forjados/patologia/lift_slab/aspect/index.htm 2012.10.23
- [7] <http://www.liftplanner.net/steamdrum.html> 2012.10.23
- [8]